

STP | ETP | ESTP | RO | SOFTNER | ZLD

**AWETECH WORKS PVT. LTD.**

Mob.: 97184 58386 | 97798 12699 | 91589 80555

e-mail : [sales@awetechworks.com](mailto:sales@awetechworks.com) | web : [www.awetechworks.com](http://www.awetechworks.com)

FEATURES	VALUE
TECHNOLOGY	<b>PHYSIO-CHEMICAL</b>
SETTLING TANK	<b>MS FABRICATED</b>
OIL SKIMMER	<b>INDUSTRIAL BELT TYPE</b>
CHEMICAL REQUIRED	<b>ALUM &amp; POLYELECTROLYTE</b>
*CHEMICAL MIXING	<b>BY AGITATOR</b>
*FLOW METER	<b>INLET &amp; OUTLET</b>
*UF MEMBRANE	<b>FOR ULTRA FILTRATION</b>
*DISINFECTION	<b>ULTRA VOILET / CHEMICAL</b>
*OPERATION	<b>AUTOMATIC/MANUAL</b>
CHEMICAL DOSING	<b>AUTOMATIC</b>
*AGITATOR SPEED CONTROL	<b>AUTOMATIC</b>
LEVEL CONTROL	<b>AUTOMATIC</b>
ON-OFF	<b>AUTOMATIC</b>
FILTER / RINSE/ BACKWASH OPERATION	<b>AUTOMATIC</b>
*SLUDGE DISPOSAL	<b>AUTOMATIC</b>
OIL SKIMMER CONTROL	<b>AUTOMATIC</b>
<b>INTERNET OF THINGS(IOT) FUNCTIONALITY</b> <i>GET KEY PERFORMANCE INDICATOR OF ETP SYSTEM OVER SMS/MAIL .....DAILY!!</i>	
*RECYCLED WATER VOLUME	<b>YES</b>
*ETP OPERATION HOURS	<b>YES</b>
*WATER SAVED PER DAY	<b>YES</b>
*ETP MOTOR HEALTH STATUS	<b>YES</b>

\* ETP's Available in Both Automatic & Manual Variants. In Manual ETP the automatic features shown above need to be operated manually.  
 \* Features marked with asterisk (\*) is optional  
 \* Picture shown are for illustration purpose only. Actual products may vary due to product enhancement.



**MODEL PC CONICAL**

**OUR QUALITY ASSURANCE**



Sewage Grade Pump  
Crompton/Kirloskar



Belt Type Oil Skimmer  
with Crompton Motor



Automatic Multiport  
Valve

## MODEL - PC - CONICAL & LAMELLA

RATING IN LITRE PER HOUR	RATING IN KLD @ 16 HRS OPERATION
250 LPH	4KLD
500 LPH	8KLD
750 LPH	12KLD
1000 LPH	16KLD
1500 LPH	24KLD



# MODEL PC LAMELLA

**AWETECH WORKS** gives you a choice to customize your Effluent Treatment Plant (ETP), that best suits your application and budget. Our sales executive will help you to select the required features like level of automation, UF membrane, IOT functions etc.



## WATER & WASTE WATER SOLUTIONS



Industrial RO Purifier



Water Softner



Compact Sewage Treatment Plant



Rain Water Harvesting



VFD and PLC System



Automatic Chemical Dosing Pump



Ultra Filtration Membrane



Ultra-Violet Disinfection System



Filter Vessels Pentair



# RECYCLE & REUSE

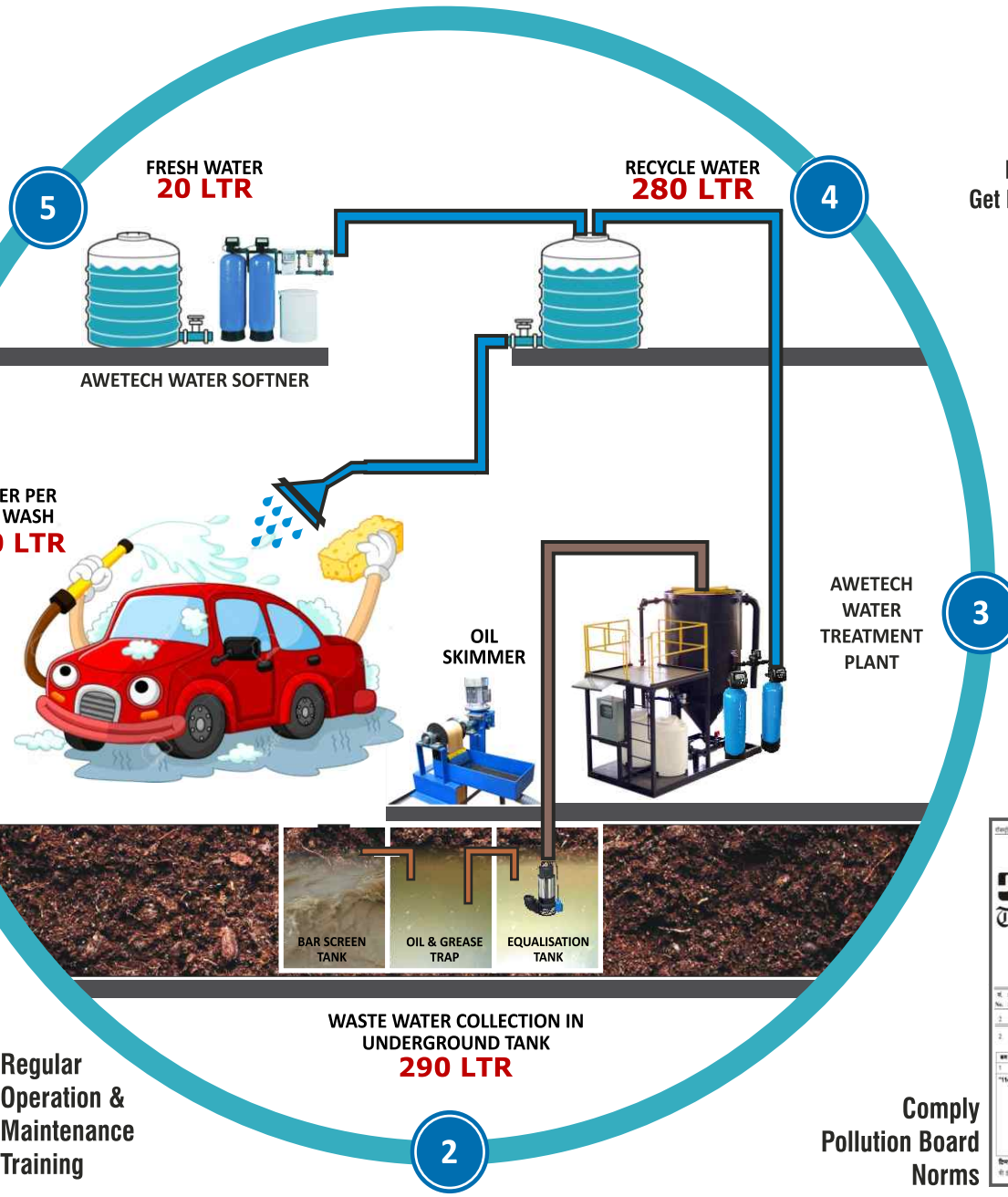
Wash Your Vehicle in

**7** ltrs. per Bike

**20** ltrs. per Car



Internet of Things (IoT)  
Get ETP performance status on SMS/Mail



Regular Operation & Maintenance Training

WASTE WATER COLLECTION IN UNDERGROUND TANK  
**290 LTR**

Comply Pollution Board Norms

**AWETECH WORKS PVT. LTD**  
Economic Recycling For Efficient Reuse

<p>आप कारों की अनुपेक्षा</p> <p>एक कार को धोने के लिए 20 लीटर पानी की आवश्यकता होती है।</p> <p>यदि आप 100 कारों को धोते हैं, तो आपको 2000 लीटर पानी की आवश्यकता होगी।</p> <p>यदि आप 100 कारों को धोते हैं, तो आपको 2000 लीटर पानी की आवश्यकता होगी।</p> <p>यदि आप 100 कारों को धोते हैं, तो आपको 2000 लीटर पानी की आवश्यकता होगी।</p>	<p>सुरक्षित पानी की आपूर्ति</p> <p>सुरक्षित पानी की आपूर्ति</p> <p>सुरक्षित पानी की आपूर्ति</p> <p>सुरक्षित पानी की आपूर्ति</p> <p>सुरक्षित पानी की आपूर्ति</p>	<p>ऑनलाइन और ऑफलाइन</p> <p>ऑनलाइन और ऑफलाइन</p> <p>ऑनलाइन और ऑफलाइन</p> <p>ऑनलाइन और ऑफलाइन</p> <p>ऑनलाइन और ऑफलाइन</p>	<p>अधिकतम, ठंडा और</p> <p>अधिकतम, ठंडा और</p> <p>अधिकतम, ठंडा और</p> <p>अधिकतम, ठंडा और</p> <p>अधिकतम, ठंडा और</p>
---	---	---	--

+91 91589 80555, +91 99998 30432 | WWW.AWETECHWORKS.COM

भारत का राजपत्र  
The Gazette of India

EXTRAORDINARY  
PART II - Section 3 - Sub-section (ii)  
S.O. 11113/2018  
G.O. 11113/2018  
NEW DELHI, WEDNESDAY, DECEMBER 12, 2018

क्र.सं.	विवरण	मिटर	दिव्य
1	1	3	10
2	2	3	10
3	3	3	10
4	4	3	10
5	5	3	10
6	6	3	10
7	7	3	10
8	8	3	10
9	9	3	10
10	10	3	10